



# KLECZKÓW neighbourhood map

The area of *Kletschkau*, or today's Kleczków, was incorporated into the city in 1808. Due to its peripheral location at that time, a penal institution and a psychiatric hospital were located there, which nowadays influences the perception of the settlement as gloomy and not worth visiting.

Due to the dynamic growth of Breslau (nowadays: Wrocław), tight tenement houses quickly developed in Kleczków, which gave the settlement its typical urban character. Just after the World War II the housing estate stretching between the Nadodrze railway station and the Stara Odra (Old Odra) was called *Kleczkow*.

While being here, it is worth paying attention for example to beautiful tenement houses located in Kleczków (one of them was built in modernist style according to the project of Heinrich Lauterbach).

The history of this area was greatly influenced by the Municipal Port located on Kleczkowska Street, whose workers lived in the immediate vicinity. Currently, part of the port area is being transformed from its post-industrial function to housing and services.

In recent years the area between Czochralskiego, Rychtalska and Browarna Streets has also been developed. "Promenady Wrocławskie" – a residential complex, has been created there, so in a way a completely new part of the housing estate has come into being (called "Nowy Kleczkow" by the inhabitants).

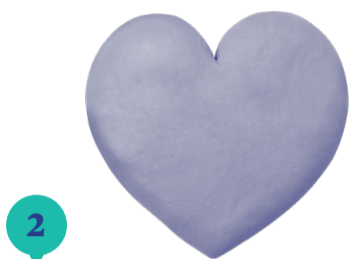
Kleczków has never offered too many green spaces, but the inhabitants have always been fond of the area by the Odra River, which was conducive to walks and picnics. A very important recreation area was the "Nord" bathing site located in Pasterska Street from 1927. There were three swimming pools and a paddling pool for children. Above it, there was a marina with a restaurant and changing rooms. The whole complex was designed by the renowned architect Richard Konwiarz. Over the years, the building fell into disrepair, but was recently brought back to life – today it serves as a summer bar. Kleczków also has a hidden garden – on the premises of the Lower Silesian Centre for Mental Health. Work is currently underway to create a park there that will be accessible to all residents.



Some of the visual materials come from the collections of the National Digital Archives

1

Few people know it, but there is a **pedestrian tunnel** leading directly from Kleczków, which does not have a park, to the square in Olbin. Currently, due to the construction of a new road, the tunnel was blocked instead of being restored for use. This place is very useful because in the past it allowed pedestrians to reach the neighbouring housing estate by a shorter road, not a roundabout: while accompanied by speeding cars and the odour of exhaust fumes. **female neighbour**



2

It is a **love story**. Straight from the backyard. Krysia and Darek met as teenagers – they had fun, spending every free moment together. She came back from Switzerland especially for him, begging her cousin to give her back her passport. He was crazy about her, constantly showing off on his motorcycle. They got married and then lived in a small room. When I was born we moved out of Kleczków. I came back here after some years. Currently, I live in Klecz-ków with my husband and two children. Krysia and Darek are still together. **Sandra**



3

There was a cabman. At the **Majewskis restaurant**. Such elegant ladies used to come there. There was one more joint – "**Rusalka**". People said that the so-called higher-ups came to Majewski. The restaurant was located at Trzebnicka Street, now the butcher's is located there. It was a nice restaurant. The other one – i.e. "**Rusalka**" – not so much. Everyone knew Majewski, while "**Rusalka**" was a dive bar. Guys were returning from work – the so-called working men, and that is where they went. For a double shot. The cabman drove these ladies from Majewski – the elegant ones. In the 80s. Majewski was still there, some time after – not anymore, unfortunately. There was revolving door at "**Rusalka**" – just like in the films. **female neighbour**

4

One of the neighbours has a **social garage** here – he makes coffee and invites his neighbours. **Wiesław**



5

This is the place where Rosa Luxemburg and the professors of the Jagiellonian University who were later murdered in the KL Dachau concentration camp were imprisoned. During World War II, members of the resistance movement from France were also held here. The **prison building** is allegedly connected to the apartments that were intended for the administration, as well as to an underground corridor through which the prison executioner was supposed to walk – so that the prisoners would not know in advance that someone would be executed that day. During the war, death sentences were still carried out here with a guillotine, which was taken by soldiers to the USSR. The blade itself has survived to this day. Currently, it is in the City Museum of Wrocław. **male neighbour**



6

I remember I was about three years old when my parents went away. At that time, I went for walks with my grandma around the psychiatric hospital. I used to collect ladybugs there. I put them into a matchbox. I tried to feed them, I gave them blades of grass, I arranged a flat. People used to take walks there back then. In the **gardens of the hospital**. Today no one take walks there anymore.. **Sandra**



7

There are also very nice **greengrocer's shops** in the district. They have a fantastic product range, e.g. coriander, and on certain days they deliver: fresh fish, meat – generally products of good quality. Tasty black olives from Greece, cheeses with nuts from Italy. The **po schodkach greengrocer's shop** – it is very tiny. It has maybe 5 sq m. However, all residents are used to the specific days of goods deliveries. This is very helpful. In addition, the store is open from three in the morning! **Sandra**



8

There was a shop. "**Sam**" – a **grocer's store** non the corner of Kleczkowska Street and Trzebnicka Street (currently a lamp store). You went there to buy a monthly subscription for milk. In the morning it was delivered directly at the flat's door. **Mariusz**

9

The so-called **XD monument** – called a monument of modern art, forming the developer's logo (completely by chance, surely)... One day it may eventually become covered with greenery. It will look much better then... **Eula**



10

An undeveloped wild meadow that allows you to relax in the bosom of nature, away from the streets and concrete. It is worth to take a blanket with you and enjoy the largest green area in Kleczków. **Kya**



11

I remember that in the 1980s there were still signs on the streets with the wrongly spelled name of the district – *Kleczków* (with „ę”). It was the result of incorrectly copied pre-war documents, where the wrong name of Kleczków has been used. Historically, the name was supposed to come from the so-called *klecзки*, that is – the bells on the necks of grazing cattle. **Mariusz**

12

This is a former **swimming area** on the Oder. There was a music club in the building next to the swimming area, and before that – a restaurant. Then the building fell into disrepair. The site was restored in 2021 and then put back into use (along with a restaurant). In the past, my brother and I used to go swimming there. We were also accompanied by our mum, who often sunbathed on the grass. **Mariusz**

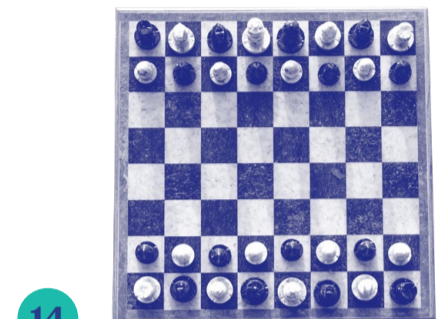
I used to come here with my parents when I was 4 years old. The **sandboxes** were made of concrete then. They seemed big – huge! When children played in them, you could hardly see anyone. **Sandra**

In 1967, we caught a live **rat** in the changing room of our club. As a reward, we played table tennis for free. The happiness was short-lived, however. While we were kayaking – me without my life jacket, a blue boat approached. I remember that I got a fine of 50 zlotys then. **Leszek**



13

I remember that in winter we used to skate on the type of **skates** that you screw to your shoes. You could skate even on the cobblestones, behind the bus to **Kraszewskiego Street**, because it was so slippery. **male neighbour**



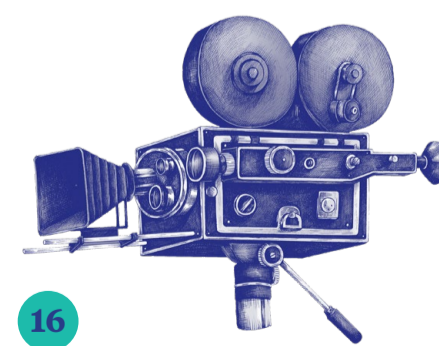
14

The "**Polonia Wrocław**" **Chess Club** used to be located in the now defunct building of the Railway Rolling Stock Repair Company. I went to chess classes there. Proms were also organised there. **male neighbour**



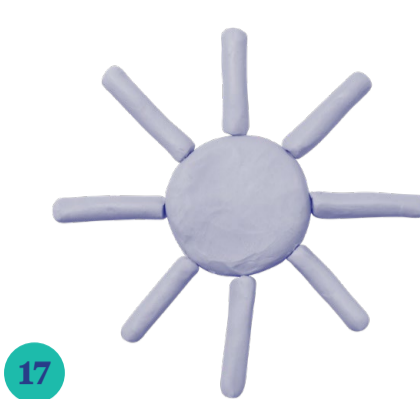
15

Right after the war, the backyard was separated by fences. You had to climb the garages and then jump from them to the other side or walk around – through the doorways. On the other side, closer to Kraszewskiego Street, there was a **fire fighting reservoir**. People used to skate there in winter. In the garages in the backyard there was a blacksmith's workshop and a military supplies depot, and after the war there was a stable with horses. There were also **gardens**, but communal ones. Thanks to this, fruit trees have been preserved to this day. In one of the tenement houses at Kraszewskiego Street, which was built in 1926, a **freight elevator** has survived. Then parts of the elevator were stolen, and much later, its shaft was closed because people often dumped rubbish there. **Ewa**



16

During the Recovered Territories Exhibition, about eight hundred camp beds were put in our school, and a so-called collective accommodation was organised as well. The most famous graduate of the school – **Janusz Kamiński** worked on the *Schindler's List* film. **Ewa**

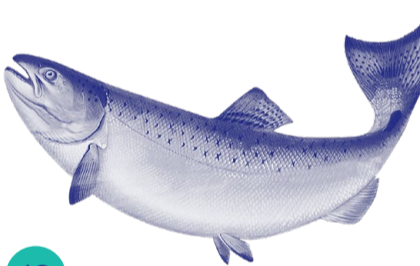


17

This place looks quite spectacular – two crossing **distributaries of the Oder**. I especially recommend watching **sunsets** from here. The sunrays reflect on the water surface, and then the sun hides behind the canopy of trees. **male neighbour**

18

The **dairy** was located where the dentist is now – on **Trzebnicka Street**. For helping to carry milk cans, you could get your milk without standing in a queue. They also sold butter by weight there. If I remember correctly, it was open from 10:00 a.m. on Sundays.. **female neighbour**



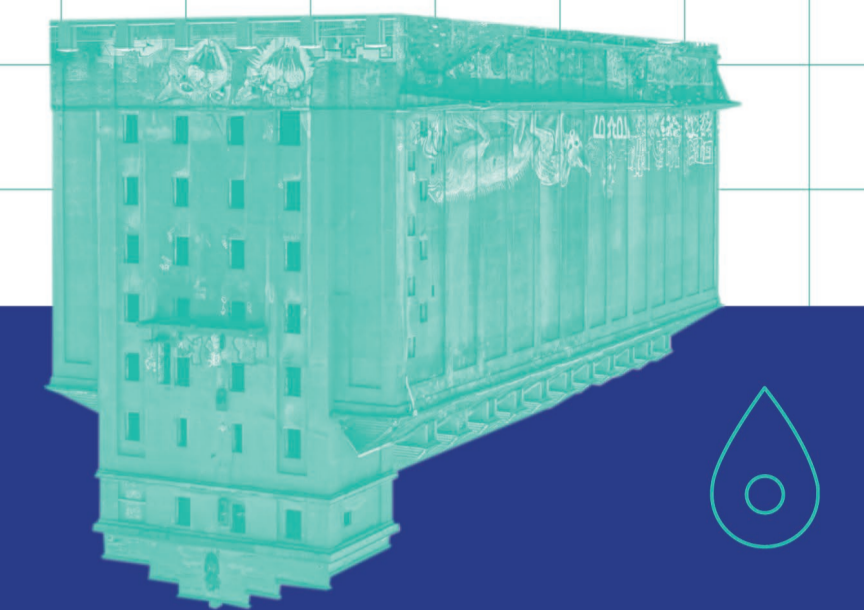
19

No one went to the **City Port**. I only discovered this place about ten years ago. You always felt some distance to this area. City port... The forbidden area. We felt respect for this place. However, barges carrying goods were going through there, and anglers were catching fish in the Port. **Mariusz**



20

There was a **marina** at the Trzebnicka bridges. In the 1980s, cruise ships still sailed there. **Mariusz**



neighbourhood map

# KLECZKÓW



## Sąsiedujemy <sup>W</sup>

Neighbourhood is a programme of animation and cultural activities in Wrocław's housing estates run by the Strefa Kultury Wrocław (Wrocław Cultural Zone). For several years we have encouraged the residents of Kleczków, Brochów, Olbin and Oławskie Przedmieście to get to know each other and build neighbourly relations. Since 2021 we have also included Huby, Różanka and Gajowice in our backyard activities. We continue to walk around the nooks of the housing estates with the city guide, Szymon Maraszewski, who plays the lead role in two seasons of the series "Tales from the housing estates". You can watch all the episodes on the website, Facebook and YouTube of Strefa Kultury Wrocław.

In 2021 we also invited the residents of Oławskie Przedmieście, Olbin, Kleczków, Brochów, Księży, Nadodrze, Świdnickie Przedmieście and Grunwaldzki Square to co-create with us neighbourhood maps of these housing estates. No one knows as many stories about the neighbourhood as our male and female neighbours, so we spent several months collecting various stories about the most interesting, beautiful and peculiar places in the neighbourhood. Thanks to our joint efforts, you can now look at eight Wrocław housing estates through the eyes of their inhabitants – get to know their memories and present-day stories, as well as discover spaces that no longer exist.

Take the map in your hand and follow the trail of your male and female neighbours! Remember that each map is available in three languages: Polish, English and Ukrainian.

We wish you successful neighbourhood journeys!

# KLECZKÓW

neighbourhood map



WROCLAW  
NADODRZE

## MEETING PLACES

-  Curatus. Stowarzyszenie na Rzecz Promocji Zdrowia  
Kleczkowska 5
-  Rada Osiedla  
Kleczkowska 1
-  Piwnica Artystyczna „Pod Sowami”  
Kraszewskiego 26

## GASTRONOMY

-  Pan Gruzin  
Trzebnicka 64
-  Bistro Schaboszczak  
Kleczkowska 1
-  Bar Mleczny u Oli  
Kleczkowska 1B
-  Pomieszane Restaurant & Bar  
Miłosza 13
-  Sebu Sushi  
Zakoładowa 28/U04
-  Maiko Sushi  
Zakoładowa 20
-  Pizzerenka  
Zakoładowa 26
-  Cukiernio-piekarnia Leguminy  
Słonimskiego 19/4LU
-  Piekarnia Ziarnoo  
Zakoładowa 11M
-  La Fileja  
Słonimskiego 6
-  KRASNOLÓD  
Zakoładowa 14D
-  Manufaktura Pierogów  
Zakoładowa 7 C E
-  Basen Beach Bar  
Pasterska

Green areas

100 m