



NAD-ODRZE neighbourhood map

Already in the 1840s, the Nadodrze area was known as a "workers' quarter" or "workers' and craftsmen's quarter". The architectural tissue of the housing estate is formed mainly by long, compact rows of tenement houses. Their characteristic feature is the facade – the front facades abound in rich ornamentation, while on the back walls no decorations can be found.

An important element of the Nadodrze's landscape are the huge courtyards, which once housed production plants, warehouses and service premises.

The housing estate did not suffer any major damage during the war, which made it a place of accommodation for Wrocław's pioneers arriving by trains to the Nadodrze station, and thus it started to function as the centre of the reborn city. It was here that the headquarters of administrative institutions were located and the first shops and services were opened.

For a long time Nadodrze was considered a dangerous and neglected part of Wrocław. Since 2004 a process of revitalization of the area has been carried out and the estate gets more and more beautiful. The facades of the buildings are regaining their former glory, many restaurants, bars and cafes are springing up. There are also many craft and artistic studios, as well as cultural institutions.

One of the most popular places among residents is the (revitalised) St. Matthias Square with a park dating from the second half of the 19th century. It was designed in the then most fashionable Berlin style, and its creator, Hans Lüdke, was awarded a prize for creating the best urban park layout.



Some of the visual materials come from the collections of the National Digital Archives

1

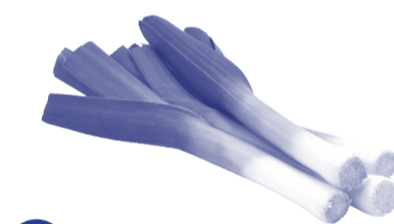
I love this building. It resembles a **fairy-tale house**. It is tiny, green, and very cute at the same time. Various plants grow on the roof. You can take a good photo shot there. In the past, this building was the end station of the Wrocław Nadodrze – Trzebnica – Prusice narrow-gauge railway line. **Fatma**



2

In this place there is a **marketplace** that is open every day! They have everything you may need: vegetables, fruit, meat. There is also a tiny bakery there. I love to walk along the streets, between the stalls, looking at the available products. It is also one of those places where you can bargain with the sellers. **Fatma**

The **marketplace at Ptasia** is so detached. You go between the tenement houses, there is a new building in front and the marketplace behind it. Simply out of the blue. It is like being taken to the countryside – it always amazes me. There is even a Lady with chickens there. I always go there to buy eggs because they are very tasty. I know what I am buying there – and you can buy anything! Vegetables, fruit, some weird odds and sods – like lighters. Everything. **Oliwia**



3

Our **vet**, Witek, a very friendly old man – is one of the cheapest, but very good vets. It is not a fancy place – old but local. All residents know that he works there. He is calm, precise, does not exaggerate – does not scare the patients. It feels like he knows what he is doing. he is very experienced. **Fatma**

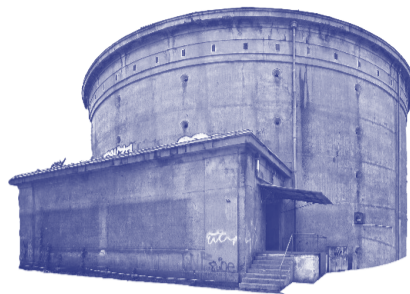


4

It is actually not a building, but a container – a wagon. There is a small workshop where you can sharpen your knives. The initiative was launched by „Fundacja Food Think Tank”. Especially for the needs of the local community. I personally find it to be a bit of a strange place, but it stays afloat so it is evidently needed! I took my knives there once, I was very pleased with the service. I will definitely come back there. **Fatma**

5

„**Brama do Nadodrza**” – a large mural depicting a street with tenement houses on the sides. The painting reflects the atmosphere of the old Nadodrze. The one before the renovations. It is set up so that it appears to be an extension of the street when you look at it. **Fatma**



6

There is a bunker in the vicinity of the **Strzegomski square**. It is in a very bad technical condition. When you look at it, it reminds you of the times of war. Inside are the warehouses of the National Museum. **Fatma**

7

The backyard brings to mind post-war Berlin. It is known for its uniqueness that attracted Steven Spielberg with the Oscar-winning film **Bridge of Spies**. There was a touching scene of the construction of the Berlin Wall that separated the Berliners for over 20 years. **Zygfryd**



8

On 8 January 1967 the actor **Zbigniew Cybulski** died in this hospital. He was brought here after an accident at Wrocław Main Railway Station. The accident was a result of an unsuccessful attempt to jump into a moving train. Cybulski – an icon of the Polish film industry. A legend. **Lech**

9

I found my first lodging here. I rented a whole **apartment** with my friend (**on the first floor**). It had the area of 160 sq m and a balcony. At that time, a student of the Theatre School had a crush on me. Today he is a well-known actor. One time he stood at night under my balcony and started singing some serenades. He was yelling: „Izabela, I love you! Please come out on the balcony! My Juliet, I am begging you, come out!” He was standing with a bouquet of flowers downstairs, I went down to him. Did we kiss then? I do not remember. There were other occasions after that. I remember that very well, especially in the context of the films he later starred in. **Izabela**

10

There is always a shortage of **parking spaces** in these backyards. It was the same 20 years ago. I once parked my car in an empty spot near the staircase entrance. I get off with the children, a nervous neighbour approaches me; she looks like a small tank. She starts screaming at me that it is not my space but hers. I responded: „Madam, this is not your private parking space.” The neighbour stated that this was her space but hers. I am supposed to leave, because if not, the neighbours will help me leave. So the gentlemen put their hands on their hips and they start walking slowly towards me. The neighbour walks behind them. There she goes with her bodyguards but I am not afraid. I start to take photos. The gentlemen say: „Please do not take photos, we will take that phone from you at once.” I say I need the proof of who took care of me and my car. They stopped and said to this woman: „This lady is right.” And ask me: „How long do you live here?” I respond: „Around 7 years.” „Well, this lady is one of us then.” „One of us?! I park here for years, she did not park here ever...” „But she is one of us, she lives here next door.” The neighbour was so upset that she took off her panties. Then she rolled up her skirt and... I took a photo of her then. I have it to this day. But today we are friends. **Izabela**



11

One evening, someone broke into the **funeral home**. There was a nice coffin standing at the window display – an oak one, so they took it. But it is not easy to sell a coffin. However, the gentlemen knew where the owner of the pawnshop lives. So they came up with the idea that they would go to his house, as he would surely buy it because it is such a nice coffin. They brought this coffin to the fifth floor. They knock. The gentleman opened the door. Then the presentation of the coffin commenced. The gentlemen said: „Alright, I will take it!” He paid them PLN 50. The gentlemen went to the liquor store. When they spent what they have received for the coffin, they concluded that its value has increased significantly. The price was 2000 zlotys now. So they went back to the pawnshop owner. They pouned on the door. The door opens and they ask for another 50 zlotys. The pawnshop owner refused. Unfortunately, a quite intense fight broke out. The gentlemen severely beaten up the pawnshop owner. They even thought they have killed him. What to do with the body? They put him in the coffin. They start to take it down the stairs, but the coffin is heavy and the neighbour of the deceased is alert. She heard the noise, opened the door and started screaming: „What are you doing here?!” The thieves dropped the coffin. They run away. The lid opens and the corpse rises from the coffin. The neighbour passed out. The pawnshop owner called an ambulance to the fainted neighbour. The ambulance arrived. However, the rescue workers could not believe the story. After all, they were summoned by the corpse from the coffin on the fourth floor. The neighbour passed out because she saw a resurrected corpse. **Izabela**

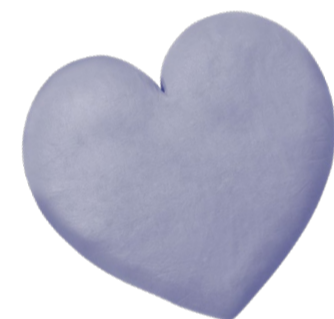


12

„The Guardian” named the „**Roma**” ice-cream parlour one of the top twenty ice-cream parlours in Europe. So our tiny ice-cream parlour at Rydygiera Street has been compared to ice-cream parlours in Venice, Rome or Paris. It was founded by two soldiers – a Pole and an Italian. To this day, the ice cream is manufactured with the use of post-German machines. Everything is made by hand. The flavours are amazing – e.g. black sesame, pumpkin, poppy seed cake. **Agnieszka**

13

The „**Serce Nadodrza**” mosaic was created by the people associated with Nadodrze. It is made of handmade tiles. It shows, e.g. faces, impressed hands. I do not feel any social unity around the housing estate, but maybe this mosaic is to show that I simply cannot see it, but it is there and exists. **Oliwia**



14

It seems to me that these are some of the most artistic backyards in Nadodrze. There is a mural with Frida Kahlo, works by Vincent van Gogh. It is the work of the artists from the **Cultural Backyard Animation Centre**, who collaborated with the residents. The entire **wall with the murals** is said to be 250 metres long. It is interesting, because on one side there are contemporary murals and on the other one there are reproductions of famous works. You can also see the portraits of the people living in the tenement houses next to this backyard. There are also beautiful ceramic elements. **Oliwia**

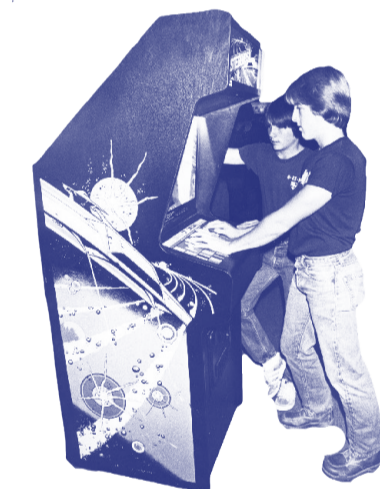


15

The **Wrocław Nadodrze station** was the third station building in Wrocław. It once had a large blue neon that was visible from a distance. It was clearly visible from Park Staszica. The Odra train passed through here. There were also trains with double-decker coaches in their draft of wagons. There was also a huge chimney near the station building – on the other side of the tracks. It was blown up in 2007. Many people travel by train from the Wrocław Nadodrze station to Wrocław Główny, because the train journey between these stations takes from 11 to 13 minutes. Even though the train route is a roundabout through Mikołajów. **Grzegorz**



In the past, i.e. in the 90s, in the only room with an inscription – District Heating Substation, which was located in the basement of the station building, there was a **games arcade**. My friend from school used to go there very often. There was a railway clinic and a (railway) technical college on the floors. **Witek**



Supposedly on one of the platforms of the station building there was a **beer booth** frequented by the poet Rafał Wojaczek. **Mariusz**

16

A beautifully preserved backyard decorated with a **giant ivy** growing over 5 floors of the tenement house. A real natural monument hidden inside a charming backyard. **MH**

17

I worked in a Combined Heat and Power Plant for about 20 years. When I look at it now, I remember walking through the gates of the plant and meeting my colleagues. I had worse and better moments there that are now part of me. Every year we saw each other at the meetings for retired employees organised by the plant. Unfortunately, the pandemic made it impossible. **Nadodrzanika**



neighbourhood map

NAD-ODRZE

Sąsiedzujemy

Neighbourhood is a programme of animation and cultural activities in Wrocław's housing estates run by the Strefa Kultury Wrocław (Wrocław Cultural Zone). For several years we have encouraged the residents of Kleczków, Brochów, Olbin and Oławskie Przedmieście to get to know each other and build neighbourly relations. Since 2021 we have also included Huby, Różanka and Gajowice in our backyard activities. We continue to walk around the nooks of the housing estates with the city guide, Szymon Maraszewski, who plays the lead role in two seasons of the series "Tales from the housing estates". You can watch all the episodes on the website, Facebook and YouTube of Strefa Kultury Wrocław.

In 2021 we also invited the residents of Oławskie Przedmieście, Olbin, Kleczków, Brochów, Księży, Nadodrze, Świdnickie Przedmieście and Grunwaldzki Square to co-create with us neighbourhood maps of these housing estates. No one knows as many stories about the neighbourhood as our male and female neighbours, so we spent several months collecting various stories about the most interesting, beautiful and peculiar places in the neighbourhood. Thanks to our joint efforts, you can now look at eight Wrocław housing estates through the eyes of their inhabitants – get to know their memories and present-day stories, as well as discover spaces that no longer exist.

Take the map in your hand and follow the trail of your male and female neighbours! Remember that each map is available in three languages: Polish, English and Ukrainian.

We wish you successful neighbourhood journeys!

NAD- ODRZE

neighbourhood map

GASTRONOMY

- A** Wilk Syty
Trzebnicka 3/1UL
- B** Bar Mleczny Mewa
Drobnera 4
- C** Mango Mama Nadodrze
Jedności Narodowej 77
- D** cafe rozrusznik
Cybulskiego 15
- E** Tajfun
Cybulskiego 3/1a
- F** ZENKA Cafe
Breakfast & Brunch Restaurant
Dubois 41
- G** Nadodrze Cafe Resto Bar
Drobnera 26A
- H** Ogień Pizza Rzemieślnicza
Pomorska 39/1c
- I** Słodki Chłopak
Łokietka 3
- J** Piekarnia Złoto Nadodrza
Pobożnego 20
- K** Food Think Tank
Łokietka 6
- L** Bistro Narożnik
Rydygiera 30
- M** Powoli
Rydygiera 25/27
- N** Pomiedzy cafe&bistro
Dubois 2
- O** Green Bus
Dubois 2/1C
- P** Bar Jak u Mamy
Łokietka 6
- Q** YuME Sushi
Pomorska 40
- R** Bar Orientalny Minh Anh
Drobnera 6
- S** Tacos Locos
Cybulskiego 1
- T** Hardcore Muffins
Jedności Narodowej 62/1A
- U** Pociąg do wina
Słowiańska 12
- V** Cukiernia on zmywa
Chrobrego 26
- W** Łaskotki Cookie Dough Bar
Dubois 6/2
- X** Pizza Pany
Cybulskiego, wejście od Drobnera 1a
- Y** TATIN Bistro – Cafeteria
plac Strzelecki 24
- Z** Cafe Równik
Jedności Narodowej 47

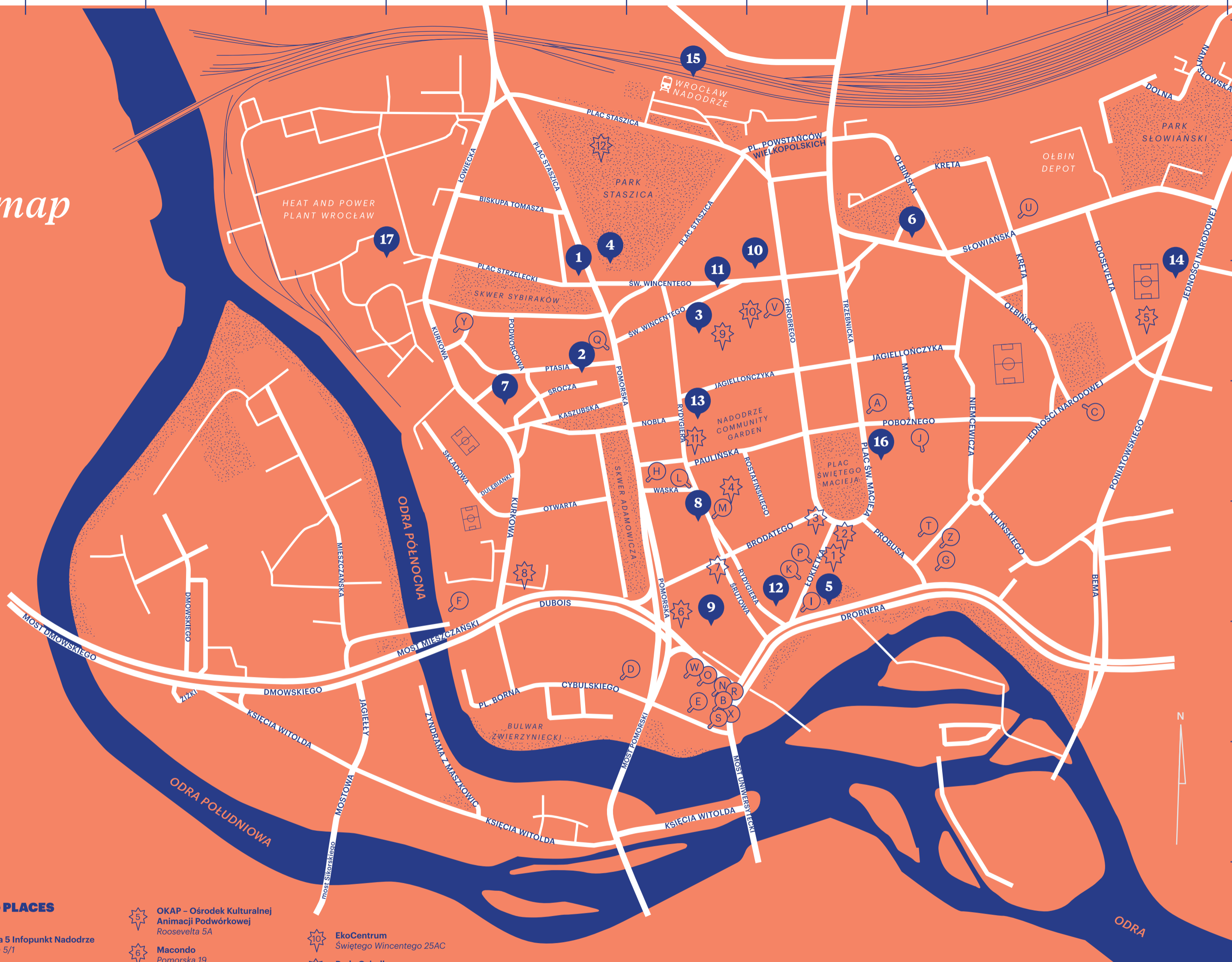
MEETING PLACES

- 5** Łokietka 5 Infopunkt Nadodrze
Łokietka 5/1
- 2** Miejska Biblioteka Publiczna
Filia nr 27
Łokietka 13
- 3** Klub pod Kolumnami
pl. Świętego Macieja 21
- 4** HART hotel&art
Rydygiera 25a

- 5** OKAP – Ośrodek Kulturalnej
Animacji Podwórkowej
Roosevelta 5A
- 6** Macondo
Pomorska 19
- 7** Bazar Miejski
Brodatego 11
- 8** CRZ „Krzywy Komin”
Dubois 33-35a
- 9** Kontury Kultury
Jagiellończyka 10A

- 10** EkoCentrum
Świętego Wincentego 25AC
- 11** Rada Osiedla
Rydygiera 43
- 12** Kontener ESK
park Staszica

 Green areas



100 m